

UNDER THE MICROSCOPE: CONVEKTA "Rybka 2.1c UCI on CD"

review updated 7.10.2006

Convekta - Rybka 2.1 UCI CD review

© 7.10.2006 Jovan Petronic. FIDE Senior Trainer. International Master.
<http://www.jovanpetronic.com>



Convekta - Rybka 2.1 UCI

System requirements:

IBM-compatible PC, Hard Disk (20 Mb of free disk space), Windows 2000/NT/XP, CD-ROM drive, playing chess interface.

CD contents:



- [Catalogue]
 - [BOOKS]
 - [CLOCKS]
 - [EQUIPMENT]
 - [SOFTWARE]
- [Demo]
 - [Advanced]
 - [Blunders]
 - [ChessAssistant Light]
 - [Cl-Art]
 - [End1]
 - [End2]
 - [Middle2]
 - [MiddleGa]
 - [Rybka demo]
 - [Strategy]
 - [Training_manual]
- [Opening book]
- [Rybka 2.1 UCI]
 - [Manuals]
 - [English]
 - [Arena]
 - [ChessAssistant]
 - [Chessbase]
 - [Fritz]
 - [Shredder]
 - [Russian]
- [Rybka for CA9]
 - [Manuals]
 - [English]
 - [ChessAssistant9]
 - [Russian]

Total CD size: approximately 220 megabytes.

Overview:

Rybka 2.1 UCI is advertised as the “[chess playing engine number one in the World](#)”, with it's estimated elo surpassing 3000!

The CD cover emphasizes Convekta's offer to a free update to Rybka 2.2 UCI and Rybka 2.3 UCI by Internet.

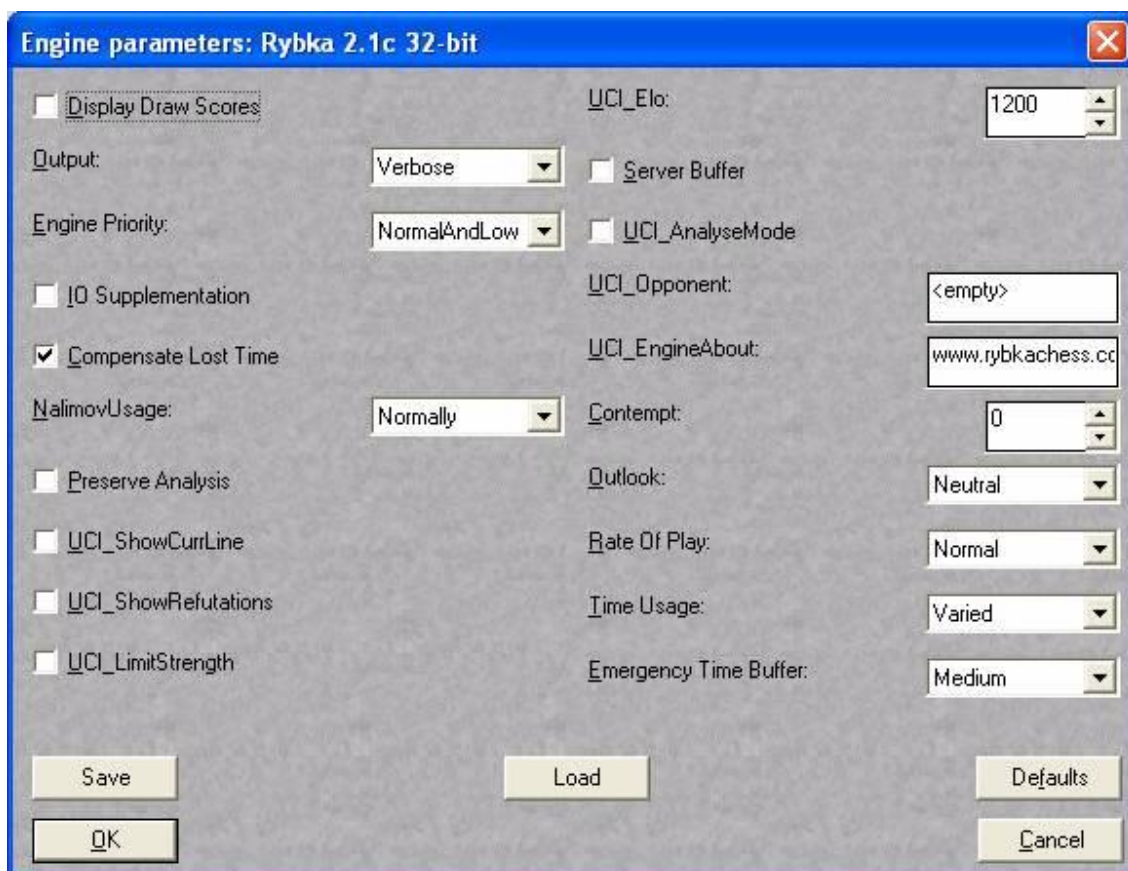
Engine offers its usage in all popular commercial chess interfaces – Chess Assistant 9, Chessbase, Fritz, Shredder, Junior, Chess Partner, as well as in the free Arena.

Installation instructions, in English and Russian, are in *.htm format, and are located inside the CD.

Convekta recommends Rybka's users to join the [Rybka Yahoo Group](#), for reading about the optimal usage of Rybka in the above mentioned programs. There you will find Rybka's author, Vasik Rajlich, too.

Rybka 2.1c UCI on CD comes with a 30 mb Fritz-compatible opening library with detailed installation instructions in MS Word format.

Two versions of Rybka 2.1c UCI are available - Rybka v2.1c.x32 (see CB engine parameters screenshot below):

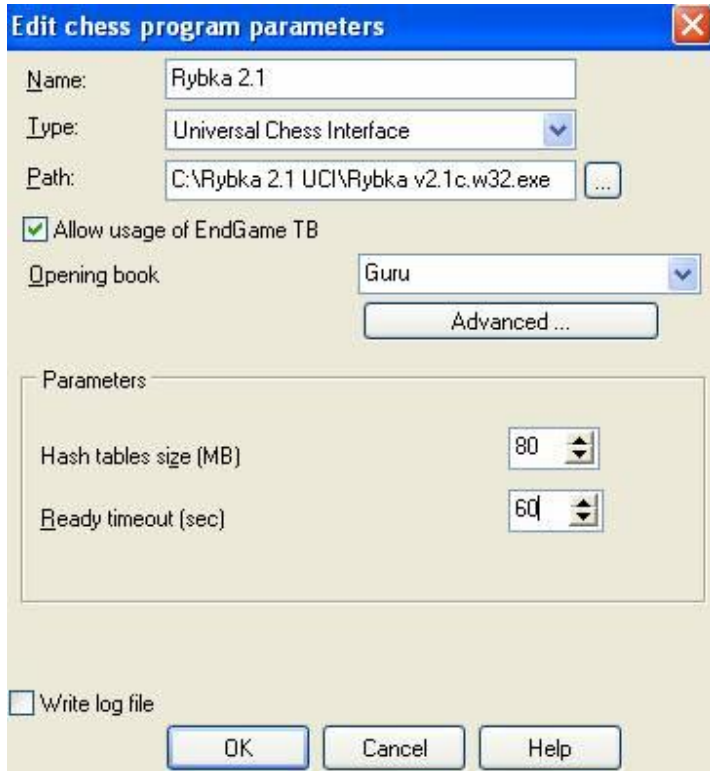


... and the Rybka v2.1c.x64 one (ranked as up to 40 elo points stronger), along with the *.dll version!

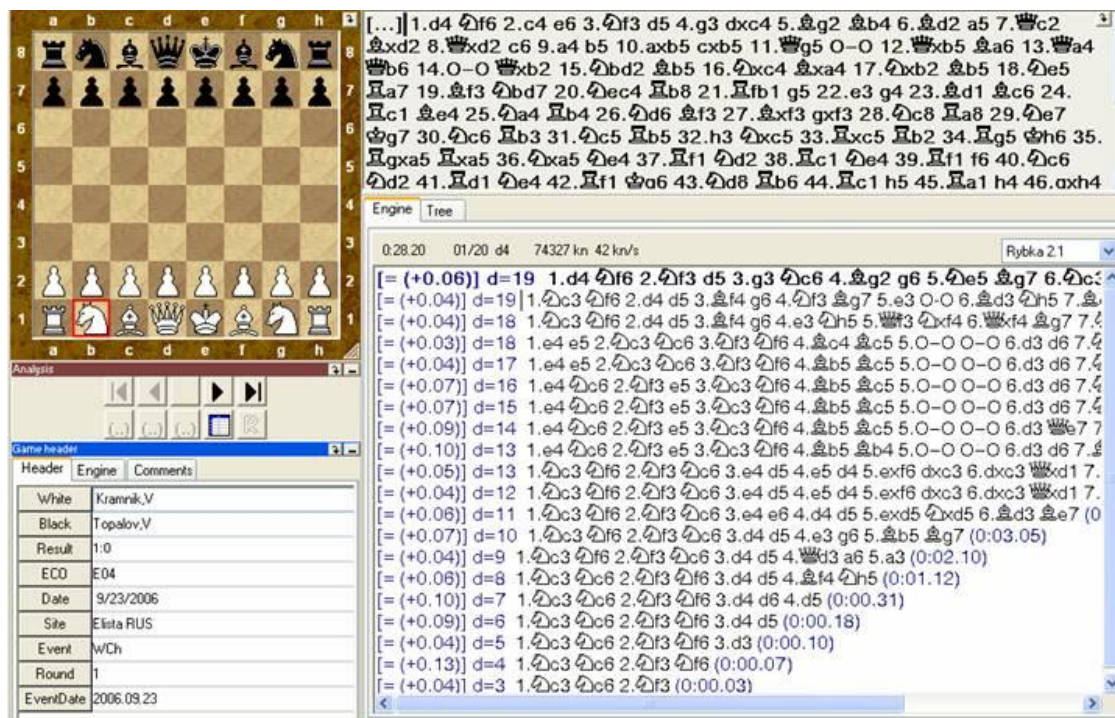
Test machine:

Intel® Celeron™ CPU, 1300 MHz, 120 Mb RAM, Windows XP Professional.

Below is a screenshot of Rybka 2.1 parameters I used, installed in Chess Assistant 9.10 build 903:



Positions tested:



Topalov-Kramnik, World Chess Championship 2006 game one. It took Rybka 2.1 a little over 28 minutes to recommend 1.d4! (after a couple of "changes of mind") as the best choice for White! 1.d4! has been played in all games so far by both grandmasters!

Game header

Header	Engine	Comments
White	Topalov,V	
Black	Kramnik,V	
Result	0:1	
ECO	D19	
Date	9/24/2006	
Site	Elista RUS	
Event	WCh	
Round	2	
EventDate	2006.09.23	

Engine Tree

0:05.18 01/47 hg6 10044 kn 34 kn/s Rybka 2.1

[...] 1.d4 d5 2.c4 c6 3.♘c3 ♘f6 4.♘f3 dxc4 5.a4 ♙f5 6.e3 e6 7.♙xc4 ♙b4 8.O-O ♘bd7 9.♙e2 ♙g6 10.e4 O-O 11.♙d3 ♙h5 12.e5 ♘d5 13.♘xd5 cxd5 14.♙e3 ♙g6 15.♘g5 ♙e8 16.f4 ♙xd3 17.♙xd3 f5 18.♙e3 ♘f8 19.♙h1 ♙c8 20.g4 ♙d7 21.♙g1 ♙e7 22.♘f3 ♙c4 23.♙g2 fxg4 24.♙xg4 ♙xa4 25.♙ag1 g6 26.h4 ♙b4 27.h5 ♙b5 28.♙c2 ♙xb2|29.hxg6 h5 30.g7 hxg4 31.gxf8 ♙xf8 32.♙g6 ♙g7 33.f5 ♙e7 34.f6 ♙e2 35.♙xg4 ♙f7 36.♙c1 ♙c2 37.♙xc2 ♙d1 38.♙g2 ♙xc2 39.♙g3 ♙e4 40.♙f4 ♙f5 41.♙xf5 exf5

[±/+0.24]] d=18 29.hxg6 h5 30.g7 hxg4 31.f8 ♙xf8 32.♙h7 ♙f8

[±/+0.24]] d=17 29.hxg6 h5 30.g7 hxg4 31.f8 ♙xf8 32.♙g6 ♙e2 33.♙g5 ♙e2 34.♙g6 ♙e2 33.♙g5

[±/+0.18]] d=16 29.hxg6 h5 30.g7 hxg4 31.f8 ♙xf8 32.♙g6 ♙e2 33.♙g5 ♙e2 34.♙g6 ♙e2 33.♙g5

[±/+0.20]] d=15 29.hxg6 h5 30.g7 hxg4 31.f8 ♙xf8 32.♙g6 ♙e2 33.♙g5 ♙e2 34.♙g6 ♙e2 33.♙g5

[±/+0.20]] d=14 29.hxg6 h5 30.g7 hxg4 31.f8 ♙xf8 32.♙g6 ♙e2 33.♙g5 ♙e2 34.♙g6 ♙e2 33.♙g5

[F (-1.27)] d=14 29.♙c1 a5 30.♙4g3 a4 31.hxg6 ♘xg6 32.f5 exf5 33.♙g5 ♙e2 34.♙g6 ♙e2 33.♙g5

[F (-1.29)] d=13 29.♙c1 a5 30.♙4g3 a4 31.hxg6 ♘xg6 32.f5 exf5 33.♙g5 ♙e2 34.♙g6 ♙e2 33.♙g5

[F (-1.24)] d=12 29.♙c1 a5 30.hxg6 hxg6 31.♙4g3 ♙f7 32.♙c7 ♙b6 33.♙g5 ♙e2 34.♙g6 ♙e2 33.♙g5

[F (-1.27)] d=11 29.♙c1 a5 30.hxg6 hxg6 31.♙4g3 ♙f7 32.♙c7 ♙b6 33.♙g5 ♙e2 34.♙g6 ♙e2 33.♙g5

[F (-1.48)] d=10 29.♙c1 a5 30.hxg6 hxg6 31.♙4g2 ♙xg2 32.♙xg2 a4 33.♙g5 ♙e2 34.♙g6 ♙e2 33.♙g5

[F (-1.35)] d=9 29.♙c1 a5 30.hxg6 hxg6 31.♙4g2 ♙xg2 32.♙xg2 a4 33.♙g5 ♙e2 34.♙g6 ♙e2 33.♙g5

[F (-1.41)] d=8 29.♙c1 a5 30.hxg6 hxg6 31.♙4g2 ♙xg2 32.♙xg2 a4 33.♙g5 ♙e2 34.♙g6 ♙e2 33.♙g5

[F (-1.25)] d=7 29.♙c1 a5 30.hxg6 hxg6 31.♙4g2 ♙xg2 32.♙xg2 ♙d3 33.♙g5 ♙e2 34.♙g6 ♙e2 33.♙g5

[F (-1.50)] d=7 29.♙c3 ♙b3 30.♙d2 ♙b4 31.♙f2 ♙f3 32.♙d2 (0:00.00)

[F (-1.34)] d=6 29.♙c3 ♙b3 30.♙d2 ♙b4 31.♙f2 ♙f3 (0:00.00)

[F (-1.36)] d=5 29.♙c3 ♙b3 30.♙c1 ♙xc3 31.♙xc3 b5 (0:00.00)

[F (-1.29)] d=4 29.♙c3 ♙b3 30.♙c1 ♙xc3 (0:00.00)

[F (-1.35)] d=3 29.♙c3 ♙b3 30.♙c1 (0:00.00)

[F (-1.35)] d=2 29.♙c3 ♙b3 (0:00.00)

Topalov-Kramnik, World Chess Championship 2006 game two. This diagram attracted a lot of attention. Above you can see an interesting “histogram” of how Rybka’s thoughts develop.

Game header

Header	Engine	Comments
White	Kramnik,V	
Black	Topalov,V	
Result	½:½	
ECO	E02	
Date	9/26/2006	
Site	Elista RUS	
Event	WCh	
Round	3	
EventDate	2006.09.23	

Engine Tree

4:00.01 01/51 Ne4 253182 kn 34 kn/s Rybka 2.1

[...] 1.d4 ♘f6 2.c4 e6 3.♘f3 d5 4.g3 dxc4 5.♙g2 ♘c6 6.♙a4 ♙d7 7.♙xc4 ♘a5 8.♙d3 c5 9.O-O ♙c6 10.♘c3 cxd4 11.♘xd4 ♙c5 12.♙d1 ♙xg2 13.♙b5 ♘d7 14.♙xg2 a6 15.♙d3 ♙c8 16.♙g5 ♙e7 17.♙xe7 ♙xe7 18.♙ac1 ♘c4 19.♘a4 b5 20.b3 O-O 21.bxc4 bxa4 22.♘c6 ♙xc6 23.♙xd7 ♙c5 24.♙c3 g6 25.♙b1 h5 26.♙b7 e5 27.e4 ♙f6 28.♙c2 ♙a3 29.♙d1 ♙d6 30.♙d2 ♙fd8 31.♙d5 ♙xd5 32.cxd5 ♙xa2 33.♙f3 ♙f8 34.♙d3 a3 35.♙b3 f5 36.♙xa6 ♙xb3

[± (+0.45)] d=21 16.♘e4 ♙e7 17.♙g5 ♘c4 18.♙ac1 ♘de5 19.♙b3 ♙xg5

[± (+0.48)] d=20 16.♘e4 ♙e7 17.♙g5 ♘c4 18.♙ac1 ♘de5 19.♙b3 ♙xg5 ♙e2 20.♙b3 ♙xg5

[± (+0.47)] d=18 16.♘e4 ♙e7 17.♙g5 ♘c4 18.♙ac1 ♘de5 19.♙b3 ♙xg5 ♙e2 20.♙b3 ♙xg5

[± (+0.47)] d=17 16.♘e4 ♙e7 17.♙g5 ♘c4 18.♙ac1 ♘de5 19.♙b3 ♙xg5 ♙e2 20.♙b3 ♙xg5

[± (+0.48)] d=16 16.♘e4 ♙e7 17.♙g5 ♘c4 18.♙ac1 ♘de5 19.♙b3 ♙xg5 ♙e2 20.♙b3 ♙xg5

[± (+0.37)] d=16 16.♘f3 ♙e7 17.♙f4 ♘c4 18.♙ab1 ♘f6 19.♙xd8 ♙xd8

[± (+0.39)] d=15 16.♘f3 ♙e7 17.♙f4 ♘c4 18.♙ab1 ♘f6 19.♙xd8 ♙xd8 20.♙xd8 ♙xd8

[± (+0.41)] d=14 16.♘f3 ♘b6 17.♙xd8 ♙xd8 18.♙xd8 ♙xd8 19.♙f4 ♘c6

[± (+0.39)] d=13 16.♘f3 ♘b6 17.♙xd8 ♙xd8 18.♙xd8 ♙xd8 19.♙f4 ♘c6

[± (+0.43)] d=12 16.♘f3 ♘b6 17.♙xd8 ♙xd8 18.♙xd8 ♙xd8 19.♙f4 ♘c6

[± (+0.34)] d=12 16.♘e4 ♙e7 17.♙g5 ♘c4 18.b3 ♘ce5 19.♙c3 ♙xg5 : ♙e2 20.♙b3 ♙xg5

[± (+0.53)] d=11 16.♘e4 ♘f6 17.♘xc5 ♙d5 18.e4 ♙xc5 19.♙f4 O-O 20.♙f4 O-O 20.♙f4 O-O

[± (+0.43)] d=10 16.♘e4 ♘f6 17.♘xc5 ♙d5 18.e4 ♙xc5 19.♙f4 O-O 20.♙f4 O-O

[± (+0.54)] d=9 16.♘e4 ♘f6 17.♘xc5 ♙d5 18.f3 ♙xc5 19.♙d2 ♙b6 20.♙d2 ♙b6

[± (+0.47)] d=8 16.♘e4 ♘f6 17.♘xc5 ♙d5 18.e4 ♙xc5 19.♙d2 O-O 20.♙d2 ♙b6

[± (+0.49)] d=7 16.♘e4 ♘f6 17.♘xc5 ♙d5 18.f3 ♙xc5 19.♙d2 ♘c4 20.b3 ♙d2 ♙b6

[± (+0.53)] d=6 16.♘e4 ♘f6 17.♘xc5 ♙d5 18.f3 ♙xc5 19.♙d2 ♘c4 (0:02.02)

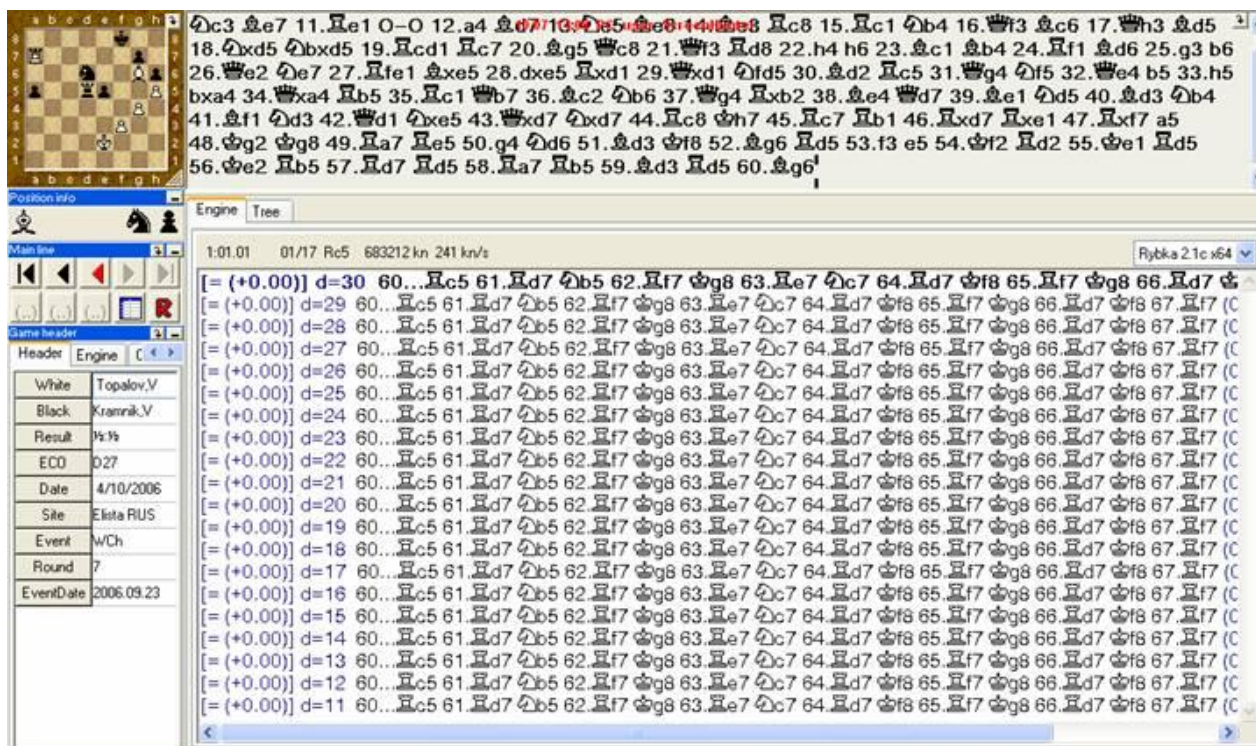
[± (+0.44)] d=6 16.♘f3 ♘f6 17.♙c2 ♙b6 18.♘a4 ♙c6 (0:02.02)

[± (+0.35)] d=6 16.♙e3 O-O 17.♙ac1 ♘de5 18.♙e4 ♙f6 (0:01.56)

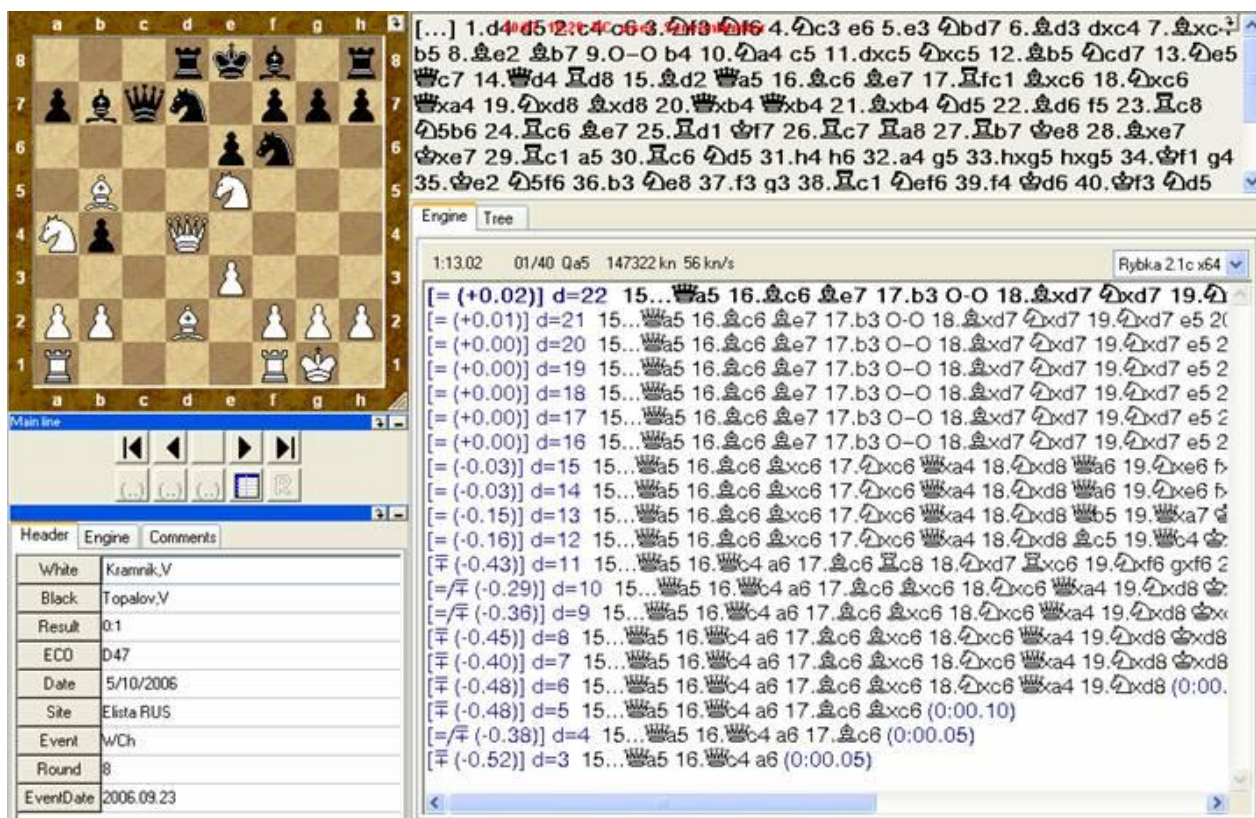
Topalov-Kramnik, World Chess Championship 2006 game three. I dedicated four hours of PC life to the interesting position above, where White’s development advantage, combined with Black’s King in the center, offers the attacker tactical possibilities. Rybka seems to have assessed the position well enough to delay a piece sacrifice for one move, as opposed to the immediate attractive 16.Bg5 played.

Test Machine:

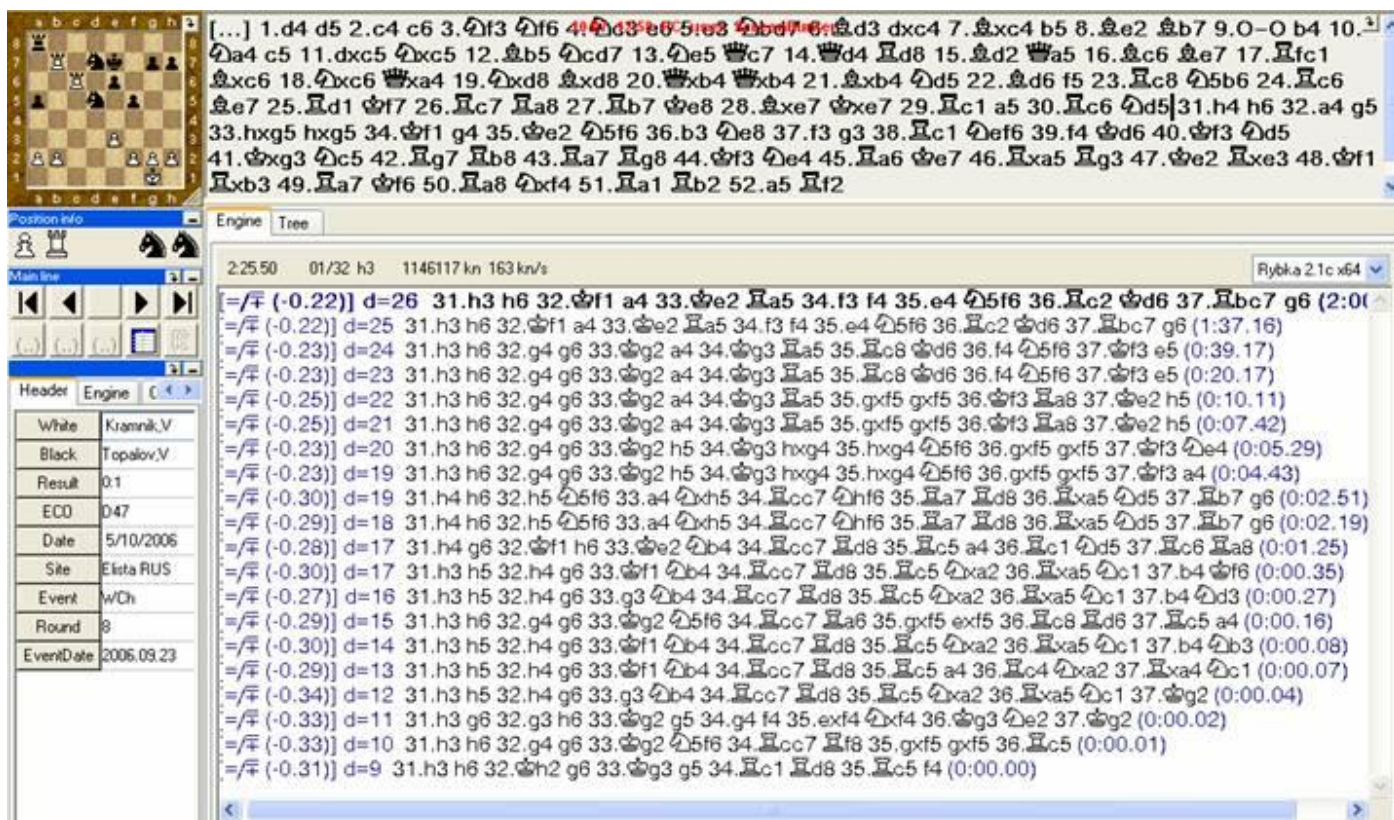
Intel® Pentium® 4 CPU, 3.00 GHz, 448 MB RAM, Windows XP SP2.



Topalov-Kramnik, World Chess Championship 2006 game seven. In this position, Black being a pawn up, two human champions agreed to a draw. Was it really that equal, that Black, or White (why not?) could not have tried a bit more? Rybka, after a second or two, thought it was. After an hour of extended thought, not a bit had changed.



Topalov-Kramnik, World Chess Championship 2006 game eight. Another hour of Rybka analysis did not change its mind of the best move, found after only a few seconds of initial "thinking". More proof of how an analysis engine of this power can help humans in pre-game preparations.



Topalov-Kramnik, World Chess Championship 2006 game eight. The position on the screenshot above has been annotated slightly differently by human grandmasters worldwide, the main conclusion being that Kramnik should not have played on the side where he is “weaker”! This was my personal assessment, too, although I did have some small doubts about it. I decided to give it to Rybka for a couple of hours, and to my surprise, the engine revealed it’s ingenious plans for White - on the Kingside (“weaker side”) only, with an acceptable evaluation for White! Not sure if this excavation (on a second, stronger, test machine) will make Kramnik feel better or not, it certainly hints that there is much unexplored territory to cover when assessing similar positions.

Conclusion:

I respect the evaluations Rybka 2.1c gave on the test positions above and encountered no buggy behavior at all, during the hours it ran on two test machines. Rybka 2.1 UCI tops the engine charts and is compatible with a lot of popular chess software. For optimal usage, all included instructions are a must-read. A considerable amount of time may be necessary to explore all the possibilities and talents of Rybka 2.1, added to the time I enjoyed spending for this review. Owners of the Rubka 2.1c UCI on CD are entitled to free upgrades, via the Internet, for Rybka 2.2 and 2.3! A free update of Rybka 2.1o UCI is available now. Rybka 2.1c UCI on CD is a piece of software you would not want to miss having.

Product link: [Rybka 2.1c UCI](#) (single-processor) [on CD](#)